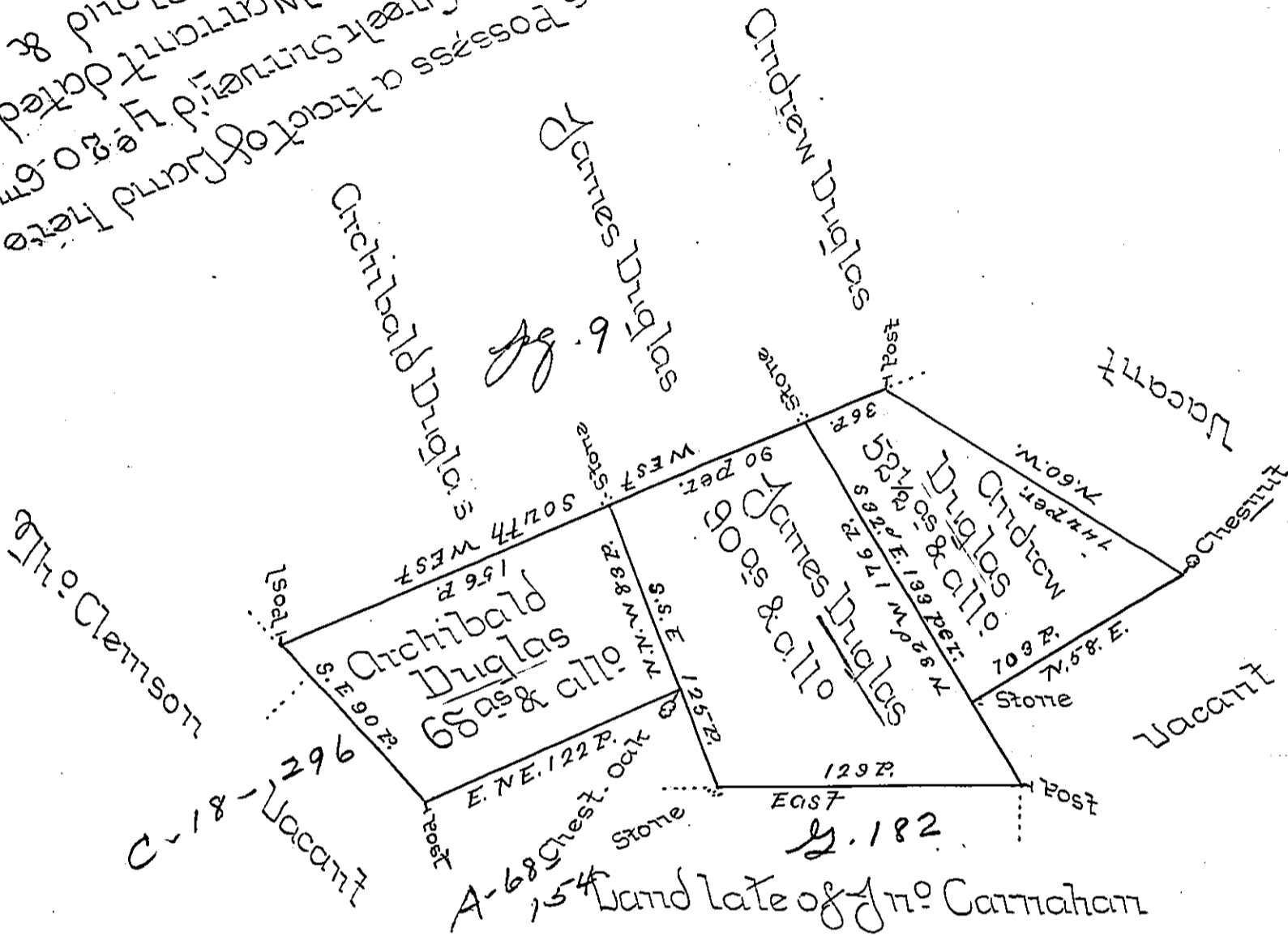


The Douglasesses possess a tract of land here
 on a branch of Poplar Creek surveyed by Isaac Jaylor
 on a branch of Poplar Creek surveyed by Isaac Jaylor
 of May 1771 granted to Joseph Cloud &
 Contents 5000s



By Virtue of three Warrants from the Proprietor: Dated
 * the 21st of July Anno Dom: 1738 The above Described three
 small Tracts of Land were surveyed to the above mentioned
 Douglasesses in Salisbury Township in Lancaster County the
 20th 6th 1740

P Saml Lightfoot

* Warrant for Andrew Douglass bearing
 date the 23^d of March 1738 See the Warrant No 58

IN TESTIMONY that the above is a copy of the original remaining on file in
 the Department of Internal Affairs of Pennsylvania, made
 conformably to an Act of Assembly approved the 16th day of
 February, 1833, I have hereunto set my Hand and caused
 the Seal of said Department to be affixed at Harrisburg,
 this first day of November 1898.



James W. Latta
 Secretary of Internal Affairs.